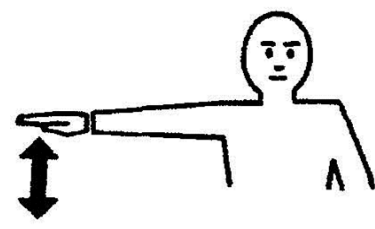


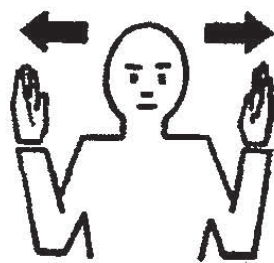
TRACTOR MOWER SAFETY

Hand Signals

Use when noise or distance does not allow normal voice communication.



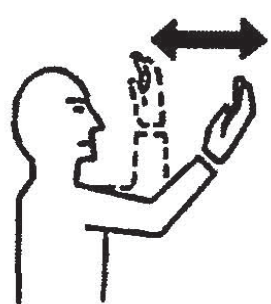
Slow It Down-
Decrease Speed



This Far to Go



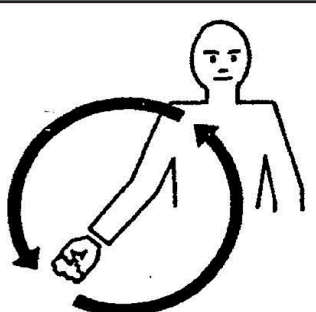
Raise Equipment



Move Towards Me



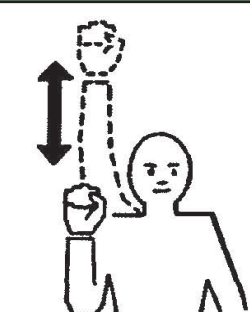
Stop



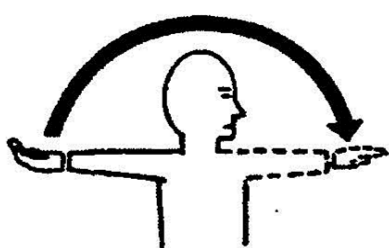
Start the Engine



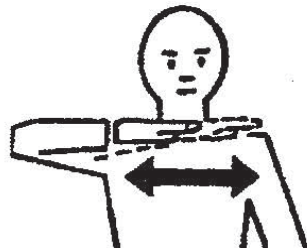
Come to Me



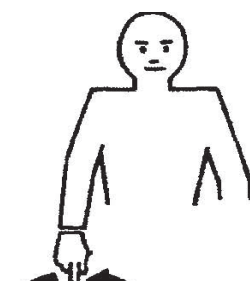
Increase Speed



Move Out - Take Off



Stop the Engine



Lower Equipment

SAFETY GUIDELINES

- Securely fasten your seat belt if the tractor has a roll-over protective structure.
- Reduce speed when turning, crossing slopes or on rough/slick/muddy surfaces.
- Do not permit others to ride.
- When stopped, set brakes and use parking lock.
- Use caution at row ends, on roads and around trees.

THROWN OBJECT HAZARDS

- Always be aware of the throwing capabilities of the mower; estimate how far and in what direction objects may be thrown.
- Walk areas where grass and weeds are high enough to hide debris; areas with high grass and weeds should be mowed at intermediate height(s).
- Equipment shields must remain in place and checked for tears/rips.

For more information on the
Tractor Mower Safety course
or other MO-LTAP courses, please contact:



710 University Drive, Ste. 121 • Rolla, MO 65409
1.866.MOROADS • www.moltap.org

OPERATING ON UNEVEN GROUND

- If area is too sloped (greater than 3:1) or deemed too uneven to safely operate mower, use a weedeater or pushmower.
- Start and prepare the mower on even ground.
- Lock the differential for better traction on slopes and slippery places.
- Slow travel speed so you have time to see and react to hazards in your path.
- Be alert for holes and ditches covered by grass or debris – wheel may drop quickly.
- Drive up and down hill, not across.
- Do not stop when going up/down hill.

